

C700

USER MANUAL

1. Safety and Cautions

- Switch off the phone in the vicinity of chemical plants, gas stations and other locations containing explosive objects.
- Keep the phone away from children.
- Please switch off your phone as instructed where notices are present.
- Switch off the phone before boarding on plane and don't switch on the phone during flight.
- Please strictly conform to your local legal regulations during a drive. When hands free function is available, please use the hands free calling device to ensure safety. Please park the car at the roadside for communication only if in emergency.
- Take special care when using the mobile phone in the vicinity of devices like pacemakers, hearing aids and electro-medical equipments, which may be interfered by the mobile phone. When the phone is switched on, a minimum distance of 6 inches (15cm) shall be kept between the phone and pacemaker. When using other medical equipments, please consult the vendors of these equipments or doctors for relevant information.
- No guarantee for the accessories and fitments not produced by the original factory.
- Never attempt to disassemble the phone by unauthorized persons. Contact the authorized service center in your region in case of any trouble with your mobile phone.
- Recharging the phone without battery being installed is prohibited.
- Charge the phone in well-ventilated environment, and keep it away from inflammable and explosive objects.
- To avoid demagnetization, keep the handset away from magnetic substances such as magnetic discs or credit cards.
- Ensure to keep the handset away from liquid. Take the battery off and contact the authorized service center if the handset gets soaked or eroded.
- Avoid using the phone in too high or too low temperature environment. Never expose the phone directly under sunlight or in high humidity or dusty environment.
- Do not use liquids or damp cloth with strong detergents to clean the handset.
- Avoid dropping, crashing or excessively squeezing the phone, or it may be subject to damages of different degrees.
- The original factory will not take any responsibility in the case of noncompliance with the above advices or improper use of the phone.
- Please send used li-ion batteries to specified locations. Do not dispose the batteries into dustbins.

CONTENT

1. SAFETY AND CAUTIONS	2
2. PHONE LAYOUT	4
3. SPECIFICATIONS LIST.....	5
4. ESSENTIAL TOPICS	6
5. GETTING STARTED	7
6. BASIC OPERATIONS.....	8
7. USING THE MENU.....	10
ENTER THE MENU.....	10
MENU OPTION LIST.....	10
SMS.....	12
CALL HISTORY	14
CONTACT	15
BROWSER.....	15
OPERA MINI	17
BREW	17
PROFILES.....	17
MP3	18
FILE MANAGER	18
TOOLS	19
GAMES	20
SETTINGS	20
8. OPERATIONS ABOUT INPUT METHODS	22
9 QUICK USER GUIDE OF USB DRIVER INSTALLATION AND MODEM SETTINGS.....	24
OLIVE CDMA MODEM SET UP	24
CONNECTION MANAGER (DIALER) FOR DIALING TO THE INTERNET	26
START THE MODEM	29
10 THE USER GUIDE OF MODEM DRIVER INSTALLATION AND DIAL UP	32
APPENDIX II INDEX.....	49

2. Phone Layout

Appearance



3. Specifications List

Phone Type	C700
Specification	
Dimensions	107x45x14.5mm
Weight	85g
Screen Display Resolution	2.0" 176*220 pixels
Card Type	None RUIM
Applicable System	CDMA1X 450MHz CDMA1X 800MHz
Contact Capacity	500 sets in the phone
SMS Capacity	100 pieces for inbox and 100 pieces for outbox in mobile phone
Preset Short Message	12 preset short messages
Call Records	20 each for missed, answered and dialed calls
Receiving Call Vibration	Support
Preset Ringing Tone Type	10 ringing tones
Preset SMS Tone Type	10 tones
Language	English, Bahasa Indonesia
Call Time	Support
Date and Time Display	Support
Alarm/Calculator	Support
MP3	Support
Receiving/Sending Short Message	Support
Input Methods	Support
Speed Dial	Support
Games	Support
Caller Number Display*	Support
Divert Calls*	Support, Network Dependency
Call Waiting*	Support, Network Dependency

Note: Functions or services marked with "*" require network

4. Essential Topics

Communication Control Keys

The 'Call control' key is used for making a call (after a number has been entered), or for viewing recent call records.

The 'on/off' key is used for ending a call (during dialing and communication), or for exiting menu under menu state to return to standby menu. Pressing and holding this key may switch on or off the phone.

Functional Keys and Soft Keys

Direction keys of up, down, left and right direction are used for browsing menus, lists, options or content compiled.

Under standby state, the up-direction key is used as shortcut key for organizer. The down-direction key is used as shortcut key for contacts. The left-direction key is used as shortcut key for messages. The right-direction key is used as shortcut key for settings. Under standby state, the left soft key is a shortcut key for accessing main menu and the right soft key is a shortcut key for Contact. The functions of the two soft keys under other states are closely related to the phone's current state.

Under standby state, you can press and hold the key '#' to switch between ringing tone and silence, press and hold the key '*' to lock keypad.

Standard Keypad

Keys from '0' to '9', and key '*' and '#' are used for dialing, inputting password, English letters, symbols etc.

Note: After the phone's standby interface stays for period of time (time length is set by the user), the phone will turn off the backlight of the screen for power saving. If the backlight of the screen goes out, you can press any key on the phone's keypad to turn on the backlight immediately.

Display Icons

Under standby state, common icons on the first row of the screen are as follows:



Signal strength received by the antenna



Alarm clock



There is (are) unread message(s)



Battery level indicator (This icon indicates full battery)



Roaming



Vibrate icon



Ring icon



Vibrate first then ring



Mute Icon



Keypad locked

Language and Input Methods

Languages supported by this phone are listed under the path [Settings]->[Display Setup] ->[Language].

This handset provides input methods as Numbers and accustomed symbols input. Under editing status, you can press the key '#' to switch between input methods and press the key '*' to switch to symbol input method. For detailed operations please refer to relevant chapters of "Operation of Input Methods".

Short Message Alert Modes

Four modes of 'Ring, Vibrate, Vibrate then ring, Off' are available for your selection under the path [Settings]->[phone setup] -> [Profiles], and then choose one alert mode->[Customize]->[Message Alert].

Call Alert Modes

This handset has four alert modes of Ring, Vibrate, Vibrate First Then Ring, off for your selection under the path [Settings]->[phone setup] -> [Profiles], and then choose one alert mode->[Customize]->[call alert].

Find Contacts

This handset provides a way to search for phone number by first letter of a name. Under the contact name list (press the right soft key under standby state or press the key under main menu to get in), after inputting the first letter of a name to be searched for correctly, the screen will display all the fit records.

Interrelated Descriptions

- International long-distance call: Dial 00 or press and hold 'o' until '+' displays and then key in district code, area code and the phone number.
- ESN Electronic Serial Number: Switch off the phone and take off the battery, you can see the barcode label of this ESN printed at the back of the phone.

5. Getting Started

Charging Your Battery

- The battery used in the phone is rechargeable. New battery must be fully charged before it is used for the first time. Only after several times of charging and discharging can the battery's efficiency be maximised.
- To ensure the battery in optimal state, we recommend you discharge the battery fully at least once every month by consuming the power until the phone is switched off automatically.
- While charging, it is normal to find the battery and the phone slightly hot. The phone will automatically protect itself when battery temperature rises so as to control temperature variation.
- The handset will sound an alert as the battery is running out. When the power has run out, the handset will be switched off automatically.

Note: Actual time of usage of the battery varies according to different operation modes and settings of network base station. If you use the phone when battery is rather low, the phone may switch off automatically. Please recharge in time.

Procedure for Battery Charging

- Plug the charger into a main socket, and then connect it to our phone
- At this time phone starts charging. The battery symbol will be gradually lengthened from right to left.
- You may choose to charge the battery under power-off or standby state. If the phone is charged under power-off state, it will be started and Charging.
- When the battery is fully charged, charging operation stops automatically. The battery symbol on the screen will maintain full-grid. At this time please unplug the charging plug.

Note: 1. To ensure safety, neither change the parts and fitments of the battery by yourself nor take off the battery outer case.

2. Please use charger of original make. Using charger of your choice may cause your phone to get damaged.

6. Basic Operations

Switching On

Pressing and holding the 'on/off' key in the standby state may switch on the phone. It will automatically search the network if the phone has no password protection. After the phone is registered in CDMA network, signal will be displayed at the top left corner of the screen. The phone is now in the standby state and you can make or answer a call.

Your phone remains in a searching state if it fails to find the available network system.

If a password for the phone is required after it is switched on, please input the correct one, and asterisk symbol '*' will be displayed on the screen as the content during the entry, then press the right soft key for confirmation. After unlocking, the phone will display the signal strength.

Switching Off

To switch off the phone, please press and hold the 'on/off' key for 2 seconds and more in the standby state. When the phone displays prompt 'power off', the phone will switch off.

Note: If you switch off the phone directly by taking off the battery, some information stored in the phone may possibly get lost or be damaged, which may cause inconvenience.

Making Call

Under standby state, input number directly via the keypad. In case of international number, press '0' twice to input '00' first or press '0' until '+' displays and then input the number completely. Then press the 'Call control' key to make the call.

If you want to make a call to the fixed telephone in other cities, please input long-distance area code.

During dialing, you can hear a ringing tone from the other party and after the call is connected, you can see a call timer on the screen. If the call fails, possible reasons would be:

- 'Line Busy' means the called party is busy or there is no available line in the network.
- 'Rejected' means this call is barred, or you have enabled call barring. Please check your network setting.
- If the called party's phone is power-off or out of service range that is unreachable, the network will inform you.
- If the called party is in a conversation, please press the 'on/off' key and redial after a while.

If the dialed number is stored in the phonebook, then the name of the called party will be displayed on the screen.

To end a call, you can press the 'on/off' key. When a call is ended, the call timer stops and the text 'Call ends' is displayed on the screen.

Saving Numbers

You may save the other party's number with phonebook, or by dialing under standby state. The number saving procedure of the former method is described in detail in phonebook menu. Specific steps for saving a number by dialing under standby state are as follows:

- Input the other party's phone number under standby state.
- Press the left soft key. You may save this number as 'New' (the number is saved in the phone), to 'Existing' (add this number to an existing contact), save this number in the phone, search, let operation pause or use the IP number to dial.

Adjusting Volume of Earpiece

During a conversation, you may press the Side Keys to adjust the volume of earpiece.

Answering Call

- When a call is incoming, the phone will prompt you according to the incoming call prompt mode you have set. To answer a call, press the 'Call control' key to answer the call directly or any key (if 'Any Key Answer' is set) to answer. To reject a call, press the 'on/off' key and the other party will hear a busy tone.
- If you have enabled the automatic answer function and the earphone is connected with the phone when a call is incoming, the phone will answer the call automatically after a certain period of time if you don't reject the call. If you have subscribed to the caller number identity service, then during the conversation caller number will be displayed on the screen. If this number is already saved in the phonebook, then caller's name will also be displayed on the screen.
- To end a conversation, press the 'on/off' key.

Note: If you have subscribed to the call diverts services, incoming call may be diverted to the specified number automatically

Silent Start

When a call is incoming, 'Silence' will be displayed at the bottom of the main screen and your phone will prompt according to incoming call prompt mode. When ringing tone or vibration is enabled and you press left soft key to select silence, the program will turn off the ringing tone or vibration function to protect you against the interference of ringing tone or vibration.

Recent Call Numbers

This handset can store 60 recent call numbers. On standby screen, press the 'Call control' key to display recent call numbers. You can press the up and down-direction key to view the called numbers and press the 'Call control' key to directly dial the selected number.

Besides, you may access the call record menu to view the recently dialed numbers.

Missed Call

If there is (are) missed call (s), 'Missed Call(s)' will be displayed on the main screen. You can access the call record menu to view the record of the calls missed.

7. Using The Menu

Enter The Menu

Under the standby state, press the left soft key to access the main menu of the phone. Under the main menu interface, press the key '1—9' to access the corresponding 'Menu option list'.

The main menu has total 12 options, all menus of the phone have the function of text prompt for corresponding function. Each set of menu is further divided into multi-item sub-menu. Menu functions may let you set, check or change the phone's various functional settings to meet your personal requirements. Please refer to the following 'Menu option list' for selection of the functions you require.

- Press the direction keys to select from the menu. Press OK key or left soft key to confirm to enter the sub-menu list of the selected menu. Then press up and down-direction key to select and press the left soft key to confirm or enter into the lower-level menu.
- Press the right soft key to return to higher-level menu. Press the 'on/off' key to exit the menu directly and return to the standby screen.
- In editing state, the right soft key has deleting function. Press it once to delete one character and hold it to delete all the input characters.
- In options, 'On' or 'Activate' is to enable corresponding function and 'Off' or 'Cancel' is to disable corresponding function.

Menu Option List

Option	Functions Description		
SMS	Text Messages	Write Message	The new message can be started with templates or The Last Written
		Inbox	Up to 100 pieces of messages can be stored in the phone.
		Outbox	Up to 100 pieces of messages can be stored.
		Sendbox	Delete, Edit, Forward, Use Number, Connect to URL
		Draftbox	Delete, Modify, Send, Send to Many, Use Number, Connect to URL
		Template	Add
		Delete Messages	Delete Outbox, Delete Inbox, Delete Sent box, Delete Draft box, All Messages
	Message Setting	Delivery report, Validity period, Auto Delete, Memory Status	
	Voicemail	Voicemail Number, Call Voicemail Box	
Call history	Missed Calls	Up to 20 missed calls can be displayed.	
	Received Calls	Up to 20 received calls can be displayed.	
	Dialed Calls	Up to 20 dialed calls can be displayed.	

	Delete Log	Delete missed calls, Delete received calls, Delete dialed calls, Delete all calls		
	Call Time	Last Call Time, Total Dialed, Total Received, Reset All Time		
Contacts	All Contacts	Write Message, IP Dial, Edit, Delete		
	Search Entry			
	Add New Entry			
	Delete			
	Caller Group	Friends ,Family, Personage,Colleague, Other		
	Memory Status			
Browser	WAP			
Brew	Mobileshop	Catalog, Search, About Download		
	Settings	Order Apps, Move Apps,Manage Apps, Main Menu View, Screen Savers, View logo		
	Help			
Profiles	General, Meeting, Outdoor, Indoor			
Opera Mini				
File Manager	Phone/card	Settings(only for audio files)	Set as Ringtone	
			Set as Alarm Tone	
		Manage (File option)	Copy To	
			Move To	
			Rename (only for file)	
			Properties	
			Delete	
		Format Memory Card		
		Mark	Select all/option	
			Mark/unmark	
			Back	
		Memory Status		
		Open		
Back				
Back				
Tools	Alarm			
	Calculator			
	Stopwatch			
	World Time			
	Calendar			
	Schedule			
Games	Snake			


	Russian Block			
Settings	Phone Setup	Language, Input, Greetings, Speed Dial, Dedicated Key, Shortcuts, U Disk Mode		
	Display Setup	Wallpaper, LCD Backlight, Brightness,		
	Call Setup	Call forward, Call waiting, Reminder , Connectivity Indicator, IP Dial, Black List, Emergency Call		
	Security Settings	Phone Lock	Password Request (Initial password is 1234), Change Password	
		Keypad Lock	Turn off/5s/30s/60s/5m	
		Call History Lock	On/Off	
		Change Password	Phone Password/ Call History Password	
Reset To Factory Default Settings		Input the password of the phone		
MP3	Music Player	Option	Repeat	
			Add List	
			List Info	Play
				Add List
				Del
		Del All		
Back				

Note: This menu structure only lists the main menu of this phone and for detailed parts please see the phone's software.

SMS

Message function is a network service. You may be required to subscribe to the service from your network operator prior to sending and receiving short messages. Under standby status, you can use the up-direction key to access the short message menu.

A message is sent to the messages center of the network, then to the targeted user by the network. If the targeted user does not switch on his phone, the network will store the message temporarily.

When the phone receives a new short message, you will be prompted according to setting and the icon  will appear at the top of the main screen to indicate unread short message.

Press the up and down-direction key in the message list interface to browse then press OK key. Press the up and down-direction key to scroll over pages.

Write Message

You can create a text message in this menu.

Every text message has a capacity of 700 characters.

- Send: Send text message.
- Save and send: Send text message and save it to outbox.

- Send to many: Send text message to others (up to 10 numbers).
- Send by group: Send text message to all the members of one group.
- Save: Save text message to draft.
- Insert template: Insert common phrase in the text message. It provides you with 10 common phrases.
- Insert number: You can insert the number from the phonebook.
- Exit: Exit Write Message.

Inbox

It is used for reading short messages received. In the inbox, the phone can store up to 50 short messages. You may press up and down-direction key to browse the short message list. Press the left and right-direction key to scroll over the list. Under short message reading state the following options are available. You may perform different operations according to your own requirements.

- Delete: Delete the short message you are currently reading.
- Reply: Reply the short message you are currently reading.
- Forward: Forward the short message you are currently reading to others.
- Call Sender: Call the number of the short message.
- IP call: use the IP number to dial the parties' number.
- Save Number: Save the number of the short message to the phone.

Outbox

It is used for storing the short messages you have saved or sent. It can store up to 50 short messages.

Sentbox

It is used for storing the short messages you have sent.

Draftbox

After editing a new text message, choose "Save". The message will be saved into draft box. If the message displays "No number", it means there is no target party to be sent. If the message isn't sent successfully, it will be saved to the "Drafts".

Template

There are 12 common short phrases stored in the phone. You can edit or delete the common phrases. After deleting, the phrase will display empty.

Delete Messages

- Delete outbox: Delete all short messages stored in the outbox.
- Delete Inbox: Delete all short messages in the inbox in the phone.
- Delete sentbox: Delete all short messages in the sentbox in the phone.
- Delete draftbox: Delete all short messages in the draftbox in the phone.
- Delete all messages: Delete all short messages stored in the outbox, inbox, sent box, draft box

Settings

- Report Status: To choose the report function or not.
- Delivery Report: This is a message sending receipt. It's used for indicating whether the message is sent successfully or not.
- Validity Period: To set the expired time of message which not been sent out.
- Auto Delete: To delete the earliest message automatically when the phone is full. Choosing on or off to enable it or not.

Voice Messages

- Call Voice Mailbox: Call the voicemail number that has been set.
- Voice Mail Number: Display the voicemail number you have set. You may also modify this number.

Call History

Missed Calls

If there is (are) missed call (s), a prompt 'Missed N Call(s)' will be displayed on the standby screen. At this time you can view the detailed information of the missed calls in the 'recent calls /missed calls' menu. Each record contains number or name (if number is already in the phonebook), date, time etc. Press the up and down-direction key to view the information of other missed calls. Press the 'Call control' key to dial this number and press the right soft key to return to higher-level menu. Missed calls are divided into the following two categories:

1. If the number is not stored in the phone, the phone number will be displayed in the missed call list. Select one of the numbers and press the left soft key to access the sub-menu of this missed call, which has the following 5 items:

- VoIP: use the VoIP number to dial the missed call.
- Save To New Location: Save this missed call number as a new record to the phone.
- Save To Existing Location: Save this missed call number to an existing record.
- Send Message: Send short message to this missed call number.
- Delete: Delete this missed call number record.

2. If this number is already stored in the phone, the caller's name will be displayed in the missed call list. Select one of the names and press the left soft key to access the sub-menu of this missed call, which has the following 3 functions: VoIP, Send message and Delete entry.

Received Calls

Save 20 recent received calls automatically. Functional operation and display mode is the same as those of missed calls.

Dialed Calls

Save 20 recent dialed calls automatically. Functional operation and display mode is the same as those of missed calls.

Call Time

- Received calls: Total all received calls time since the timer was reset last time.
- Dialed calls: Total all dialed calls time since the timer was reset last time.
- Total airtime: Total all dialed calls time since the timer was reset last time.

Delete Calls

- Delete missed records: Delete all records of missed calls.
- Delete received records: Delete all records of received calls.
- Delete dialed records: Delete all records of dialed calls.
- Delete all: Delete all records of recent calls.

Contact

Under the standby state, press the right soft key to access the contact. After accessing the phonebook, press up and down-direction key to browse records. When the cursor stops at a certain record, press the left soft key to access the menu of various operations for this record.

All Contacts

All contacts Write SMS/IP call/Edit/Delete

Search Entry

This handset provides a way to search for phone number by name. After correctly inputting the name to be searched, press the left soft key and the screen will display the record you are searching for.

Add New Entry

After accessing the Add menu, you may select to add a record to your phone.

Input name and number after selecting storage location to add the record. If you need to add other information to the record, you can do this in 'Edit' menu.

Caller Groups

You can view the records in the phonebook by group (VIP, Family, Colleagues, Friends, Others)

Delete

Delete a current record of phonebook.

Memory Status

Display the memory status of the phonebook in the phone.

Browser

WAP

This function allows you to use various kinds of services on the Internet including weather forecast, news, finance, economic information etc., which are provided by Network Carrier. According to the services of the carrier, there will be some new menu options. This function can not be used without the support of Network Carrier. More information please contacts the Network Carrier.

- Home page: in each mode, one homepage address can be saved. When you use WAP, first entering the homepage in this mode.
- Refresh: Refresh the current page.
- Bookmarks: In the option menu, you can manage the bookmark in the following way:
 - Go to: Go to the website.
 - Edit: Edit the selected bookmark and website.
 - Send: Send the bookmark by multimedia message or text message.
 - Delete: Delete the selected bookmark.
 - Delete all: Delete all the bookmarks.
 - Add bookmark: Add a bookmark.
- Recent page: You can view the records of the latest visited web pages.

- Enter address: Input the website address, and then open the web page.
- Set as homepage: Set a website as homepage.
- Save picture: Save a picture of website.
- Service inbox: You can receive service information sent by your ISP.
- Settings:
 - Edit settings: Edit home page, network account, user name and password.
 - Browse options: You can set waiting time and choose to show the images or not.
 - Service message setting: On or off.
 - Clear cache: Too much data in the cache will affect the network speed, you should clear cache.
 - Clear cookies: clear the cookies data.
 - Trusted certificates: if you want to log in website, you need to acquire the trusted certificates
- Exit: exit the website.

Set dial-up parameter

There is a submenu where we can set the user name and password in order to get to internet. The user name and password are provided by the carrier. You can follow the 2 pictures to get to the menu.



WAP

Opera MINI

Set dial-up parameter

The follow picture is the interface. First input the user name and password which were provided by the carrier, and then press ok to save it.

User Name:

Password:

OK

Back

Opera Mini

Opera Mini is not only a most fashion browser that used in mobile phone, but also an option browser that can be used to access the WEB besides the WAP. It is quit faster than other browser in the handset because it can access the Internet directly rather than through the proxy server.

Brew

We can view, buy, and download SW from Brew but should pay some loading cost. The SW is arranged according to the catalog. We can search them by key words. Most of the SW provides simple instructions, some of them are provided on free trial.

There are three submenus as follow;

- Mobileshop: we can view, buy or download the SW from Mobileshop. We may pay some cost while loading the SW.
 - Catalog: it shows the SW downloaded in our phone.
 - Search: it means that we can search the SW by some key words.
 - Help: we can find some help from this item, Such as what is the SW about, and how to pay for it, and so on.
- Settings: there are 6 functions in this menu, like Order Apps, Move Apps, Manage Apps, Main Menu View, Screen Savers, View Log.
 - Order Apps: change the SW order in the folder. There are 4 folders in it. such as main menu, favorites, work, fun.
 - Move Apps move the SW from one folder to another.
 - Manage Apps show the system information,
 - Main Menu View change the display mode of main menu in Brew
 - Screen Savers show the Screen Savers that download from mobileshop.
 - View Log: show the information of the SW, like download date, SW name and so on.
- Help: helps us to use the Brew easily.

Profiles

Here you can set different profiles according to your requirements. You have four choices: Normal, Meeting, Outdoors,

Indoors (Meeting/Outdoors/Indoors' menu same as Normal).

- Activate: Set to current active profile.
- Customize: To edit sound properties of current profile.
 - Caller Ring tone: the ring for the incoming call. 10 ring tones/Add from Memory card for choices
 - Message tone: the ring for the incoming messages. 10 ring tones/Add from Memory card for choices.
 - Alarm tone: 10 ring tones/Add from Memory card for choices
 - Power on/Power Off: 3 ring tones
 - Incoming call alert: Ringtone/Ascending/Descending/Vibrate/Vibrate & Ring/Ring after vibrating/Vibrate after ringing
 - Call alert: set the prompt mode of coming call alert. Off, ring, vibrate, vibrate then ring.
 - Message alert: set the prompt mode of coming message alert. Off, ring, vibrate, vibrate then ring.
 - Missed call alert: set the prompt mode of missed call alert. Off, ring, vibrate, vibrate then ring.
 - Volume: set the volumes of ring tone, voice, key tone.

MP3

Music Player

- Choose "List" to access music list.
- Play: Play the current song.
- Repeat on/ off
- Detail: View the information of the song.
- Add to rings: Send the current song to the Profiles.
- Add: Add more songs to list. If you set the "List auto gen" on, the list will add the songs from appointed file. If you want to add songs from other files, please set "Auto list gen" off.
- Remove: Delete the song from list.
- Remove all: Delete all the songs in list.
- Settings: You can set the parameters of MP3 player.
- In the player interface, you can use direction keys and left/right soft key to operate it.

File Manager

Open

Select one folder and press the "Option":

- Open: Open the selected folder.
- Create folder: Create a new folder in the selected folder.
- Rename: Rename the current folder.
- Delete: Delete the current folder.
- Sort: Sort and display the files in the folder by name, type, time and size.

Note: You would have different options according to different files.

Create a Folder

You can use this function to create a new folder at a specified place.

Format

You can format all the data in the memory card. The system will create a default folder. Because the data can not be recovered after formatting, please use this function carefully.

Tools

Alarm

You may set 3 alarm clocks as required.

Operation tips:

- Press the up and down-direction key in the tools main menu and select alarm. Press the left soft key to access the alarm list.
- Press the up and down-direction key to select one of the alarms and press the left soft key to access the alarm setting.
- Press the left and right-direction key in the alarm clock setting interface to select alarm clock setting content. You may set the alarm clock's State, Time, Mode and Prompt.
- When you have selected state, press the up and down-direction key to select 'open' or 'close'; when you have selected time, you can input the time directly; when you have selected mode, press the up and down-direction key to select the mode of the alarm.

Calculator

Calculator can perform four fundamental operations (plus, minus, multiply, divide). Use 0-9 keys to input a value. Press the key "+" to input plus symbol. Press direction keys to select one of the four operations: plus, minus, multiply and divide. Press numeric keys or symbol keys to input the second operation value and then select equal mark or navigation key. The result will be displayed on the screen.

Calendar

You can view the calendar for more details. This function can memorize your schedule and remind you by alarm.

View tasks: To see the schedule of the date. You can set time, date, text, alarm to the date. The schedule can be sent to files or sent by short messages and multimedia messages.

Worldtime

You can View the time in different locations of the world in this menu.

Stopwatch

It provides timing function, including typical stopwatch

- Typical stopwatch:
Split timing: Choose "Split timing" then press "Start" to start timing. When you want to time separately, press "Split". It will be shown on the screen upon the runtime. Press "Stop" to end the stopwatch. Press "Resume" to go on timing and "Reset" to reset the stopwatch. Press "Back", the screen shows "Save" window then press "Yes" to save.
Lap timing: Choose "Lap timing" then press "Start" to start timing. Press "Stop" to end the stopwatch. For more details, please refer to "Split timing".

Schedule

- You can view your schedule from this function. It can also remind you of important things and time. When you enter into it, you can do some operations, such as view, add, edit, delete, delete all. You can set up 10 items at most.
- View—— viewing information of the current item

- Add new—— add new item
- Delete—— delete the item you set up
- Delete all——delete all the items you set up

Games

This handset provides one ultra-large screen fully-graphical games: Russian Block./ snake. Here, you can enjoy a pleasant time brought by the games relaxation.

Select Games from the main menu to access the game list. Press the left soft key to confirm. When the game interface and description of the selected game appear, press the left soft key again to start the game.

- Game rules: It has 7 different squares. There are total 3 levels, 'Easy' 'Hard' 'Very hard', corresponding to different falling speeds. Default speed is 0, 500 score for speedup 1. When the speed is up to 8 or 16, you could choose to enter next difficult level.
- Help: You can adjust the direction of falling square and move it to the right or to the left to put it in proper position. Key * to pause or to restore the game; Key up-direction or Key 2 to adjust the square direction; Key left-direction or 4 to move the square left; Key right-direction or 6 to move the square right; Key down-direction or 8 to accelerate the falling speed.

Settings

Display Setup

- Wallpaper: After starting up to idle screen, display this picture as background.
- LCD Backlight: This option provides you different time periods for your selection as the backlight duration time. The screen closes the backlight automatically when the specified time period elapses. The phone has '10 seconds', '30 seconds', 'Always On' three choices.
- Brightness: You could choose different brightness type of the LCD backlight by pressing the direction key.

Phone Setup

- Language: English and Bahasa Indonesia supported.
- Speed dial: If a number in the Contact is set for a certain single-key dialing, pressing and holding this key may call this number. You can set one dial key from '1' to '9'.
- Dedicated Key: You can use the up, down, right, left keys as different shortcut keys to enter the menu.
- Shortcuts: You can add the different items to the shortcuts list.
- U Disk Mode: You can enter this menu to change the phone mode to U disk mode. Before the mode changing, make sure you have connected the phone to the computer with the data cable and also with the T-Flash card inserted. The following picture shows the step to U Disk Mode.



Call Setup

- Call forward: Divert Calls is an additional service of the network, which may divert incoming calls that meet requirements to other number specified. Users must subscribe to this service from your network operator prior to the following operations.
 - Unconditional: when someone is calling you, it will divert to the number you have set before.
 - When busy: When somebody is calling you and you are in a conversation, it will divert.
 - No Reachable: when someone is calling you and you can not call in, it will divert.
 - No Reply: When someone is calling you and you did not answer the call, it will divert.
- Call Waiting: If call waiting function is enabled, when someone is making a call to your phone and you are in a conversation, the third party will be kept hold.

Note: when you are having a conversation and if the other party is calling you, press 'call control' key to switch between the two parties for conversation. The functions of call forward and call waiting must be supported by the local operator.

- Time Reminder: It is used to remind you of your call in every 45s, 50s or 55s. You can switch it on or off.
- Connect Notice: it will note you when the call is connected. Choosing disable or enable to switch it on or off.
- IP Dial: You can edit the IP number to make a IP call.
- Black list: You can set the black list to prevent someone calling you. The status used to switch the black list on or off.
- Emergency Call: There are some default emergency calls and you can edit it by your requirements.

Security Setup

You must input correct phone password before accessing Security setup menu. The initial password is 1234.

Phone Lock

- Password request: If 'Password request' is set on, from then on the system will prompt you to enter the phone's password when switched on and only when the password is correctly entered can you use the phone.

KeyPad Lock

- Keypad can't be automatically locked if 'Off' is selected. Otherwise, after the time selected, for example 5/30/60 seconds, 5 minutes as your option, keypad will be automatically locked without any key's operation. During the time of

key guard, you can also answer the incoming call and the keypad will be locked till user press 'left soft key and " * " key' successively.

Call History Lock

- Password request: If 'Password request' is set on, from then on the system will prompt you to enter the call history's password when switched on and only when the password is correctly entered can you get call history.

Message Lock

- Password request: If 'Password request' is set on, from then on the system will prompt you to enter the Message 's password when switched on and only when the password is correctly entered can you enter the Message.

Change Password

- Change the password via this option. Enter the same new password twice and press the left soft key to confirm. The new password will become effective. During this course you may press the right soft key to discard the change at any time and return to higher-level menu.

You can change PIN password/phone password/call history password

Reset To Factory Default Settings

This function is used for restoring to the default factory settings.

8. Operations about Input Methods

"1~9" keys are used for inputting multi-character. Press the key quickly till the character appears.

When the cursor is moved, you can input the next character. Press "#" to switch different input methods.

When you need to input a space, you may press "0" key once under the English input methods. Press right soft key to clear the last character or press and hold it to clear the whole text.

ABC/abc input method

When you use eZiABC/eZiabc input method to input a character or a word, press the corresponding key. Use the up or down key to choose the word, and confirm it by pressing right direction key or "OK" key. For example, to input a word "hello", you can press "4, 3, 5, 5, 6" by turns, and your phone will compose the word automatically. Press up or down key to choose the appropriate word, and then press "OK" key to confirm it.

"123" Numeric Input

"123" Numeric Input method is used for inputting numbers. Press "#" to switch to the method. You can press "0~9" key to input the number you need.

Symbol Input

Under the editing status, pressing "*" to access the symbol menu. Use the direction keys to choose the symbol you need and press "OK" key to input it.

9 Quick User Guide of USB Driver installation and modem settings

The C700 Driver CD delivered with your MOBILE PHONE contains the USB Cable & Modem Driver application.

There are 2 folders in CD:

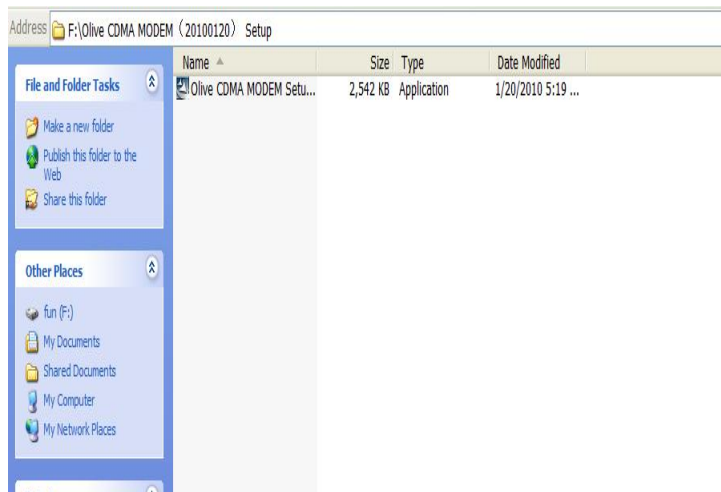
1. Olive CDMA MODEM Setup
2. Quick User Guide

You must close all firewalls and anti-virus software before installing the USB driver.

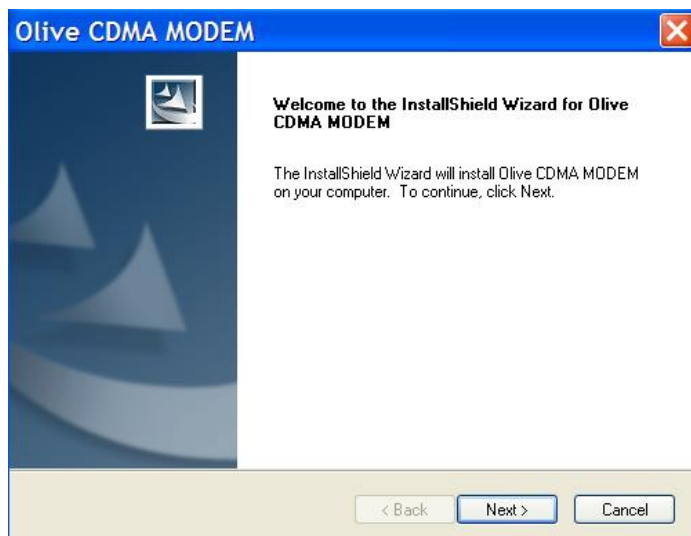
The following installation wizard is an example in Windows XP 32bits.

Olive CDMA Modem Set Up

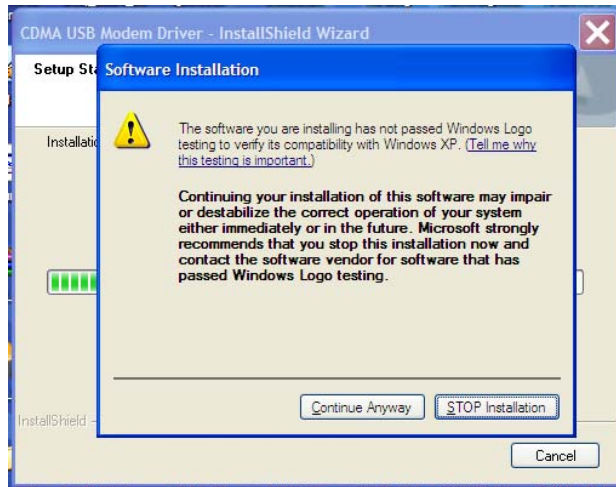
1. Install the USB driver



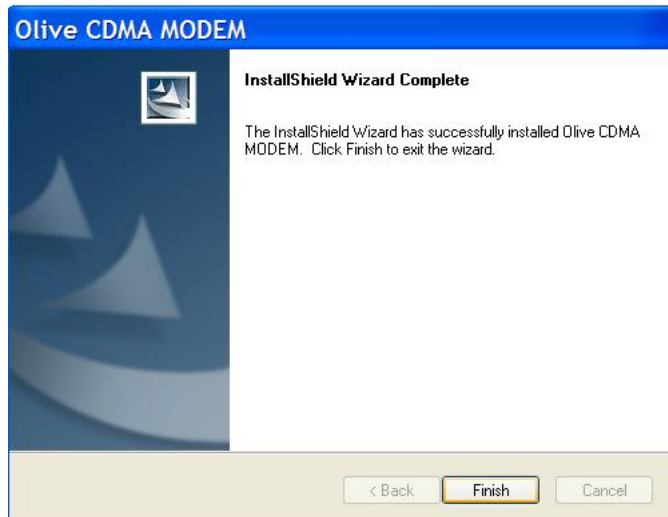
2. Double click on Olive CDMA Modem Setup.exe of the windows driver.



3. Click Next

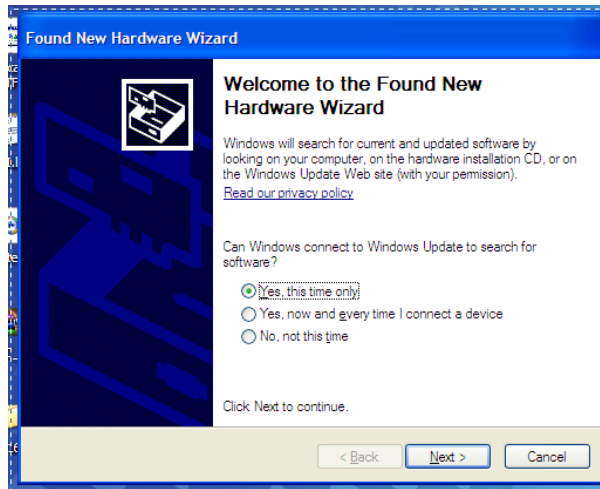


4. Click "Continue Anyway"

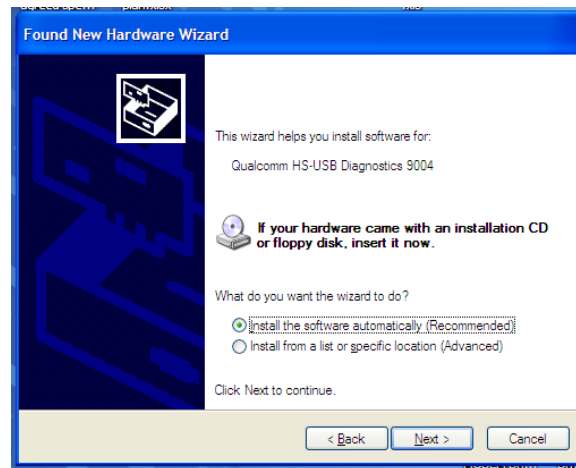


5. Click "Finish"

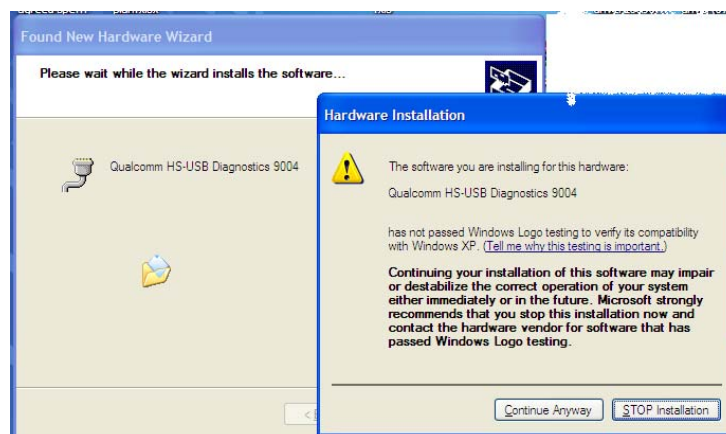
Connection Manager (dialer) for dialing to the internet



1. A hint will pop up as above "New hardware found" when connecting the phone to PC. Chose "Yes this time only" and Click Next.



2. Chose "Install the software automatically" and Click "Next"



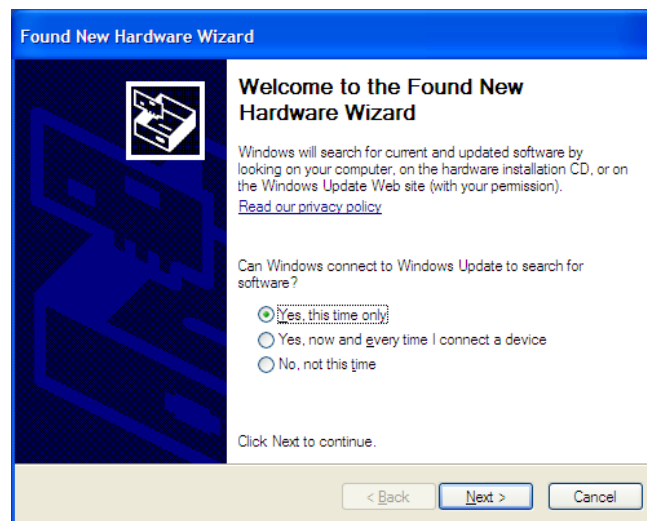
3. Click "Continue Anyway"



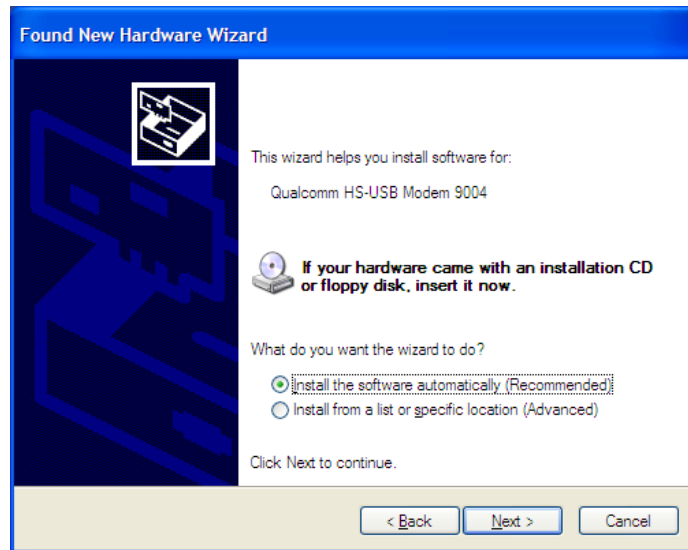
4. Click on Finish to complete the Installation of USB cable driver. The USB device installation will then complete by the following message box.



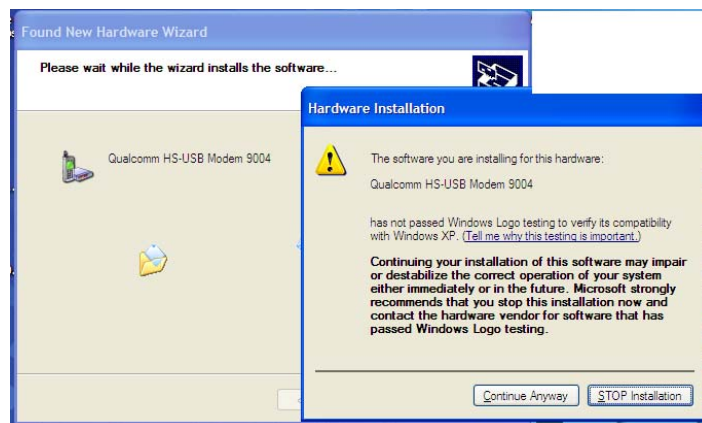
5. Consecutively The PC will ask to install Modem driver. It will show the following window.



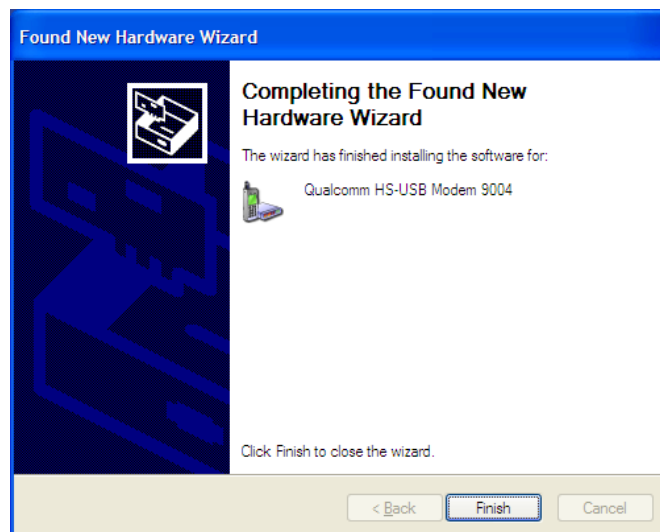
6. PC will pop up again as above "New hardware found". Chose "Yes this time only" and Click Next.



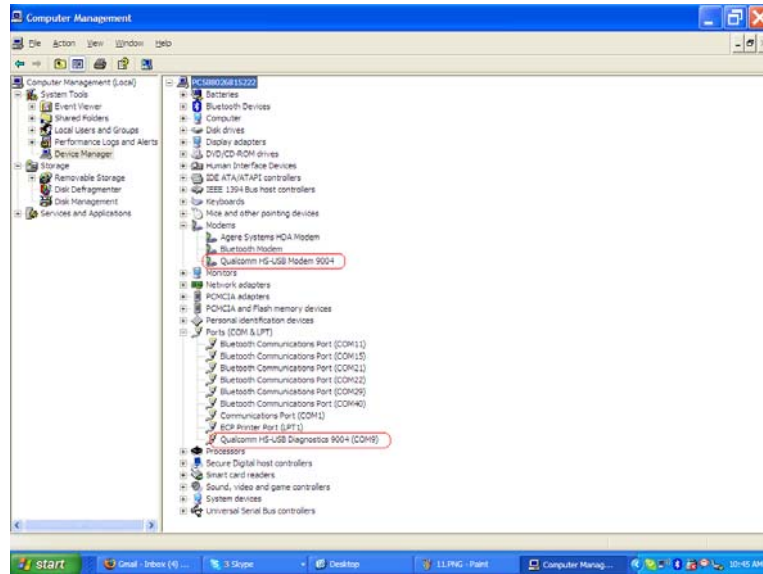
7. Chose "Install the software automatically" and Click "Next"



8. Click "Continue Anyway"

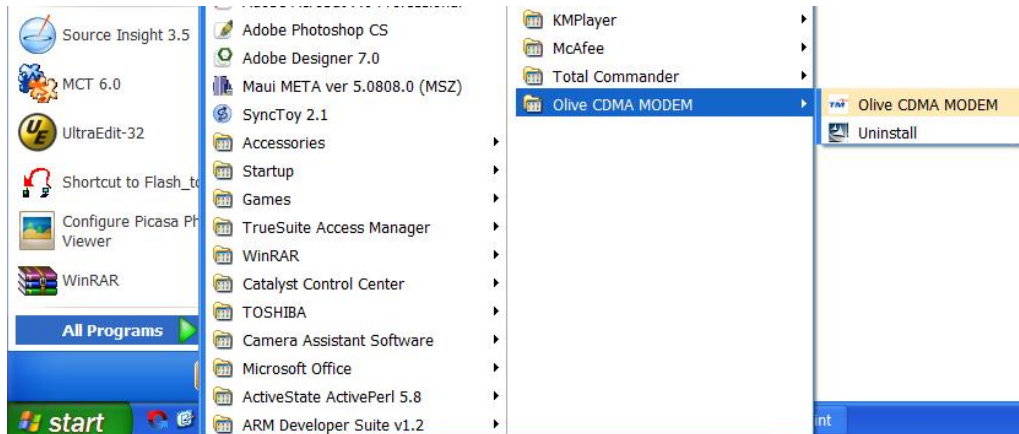


9. Click Finish. The driver installation is finished. Verify the drivers as per below picture of Device manager.

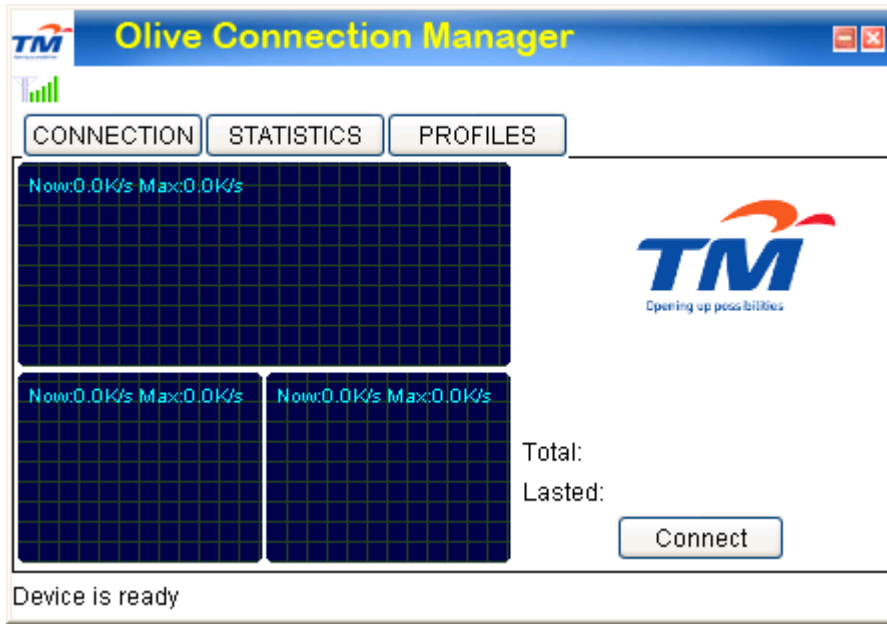


Start the Modem

1. Start the Olive CDMA modem as follow picture



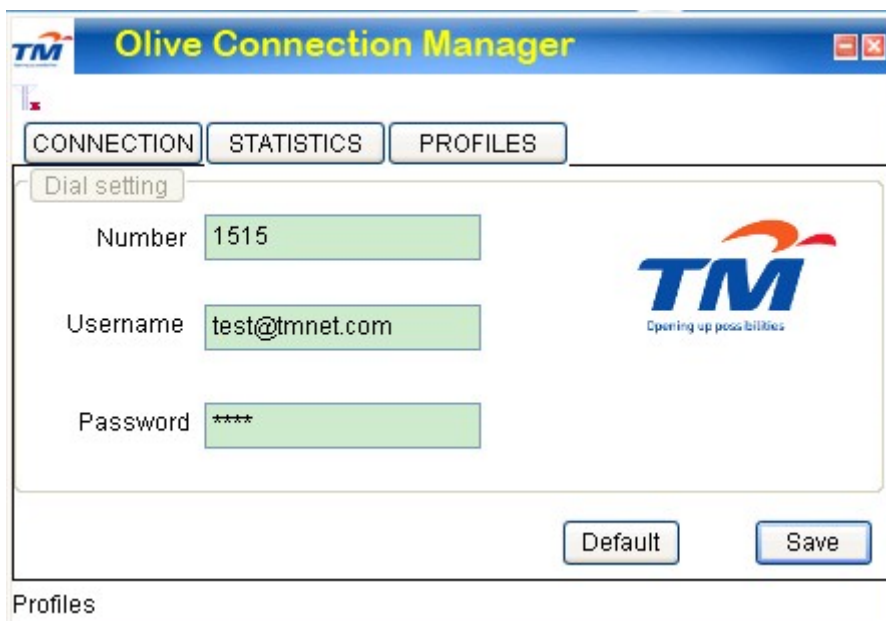
2. It will appear as following picture.



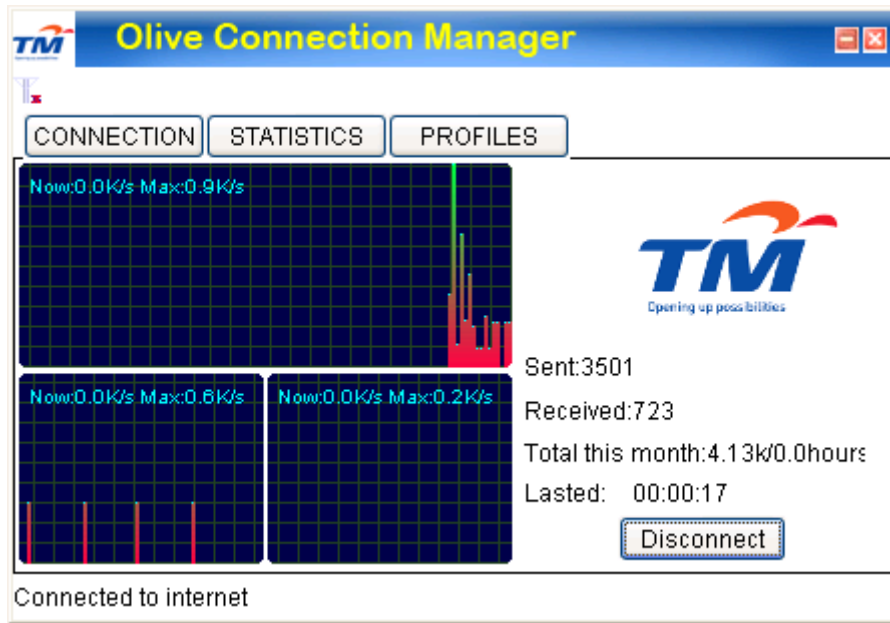
3. The profiles menu includes the number, username, passwords. You can change the value of number. Username. Password by saving it. The default value here is as following

User Name	test@tmnet.com
Password	test
Dial Up Number	1515

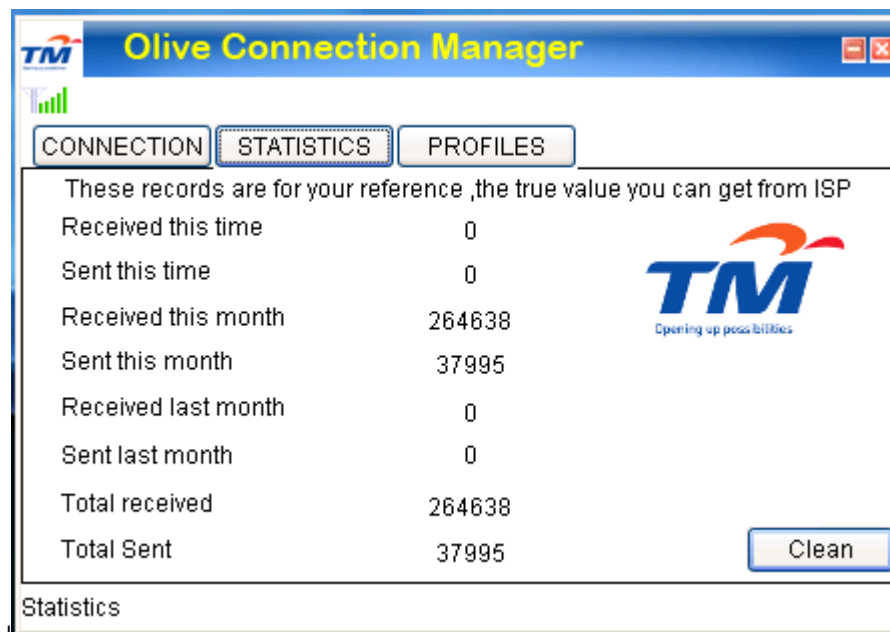
**** Please use the user name and password provided by the operator. The following picture is just a example.



4. Click the "connect" to connect to the internet. It will show as following picture when connected to the internet.



5. The statistics menu shows some information when getting on internet.



6. When you want to switch off internet, please click "disconnect".

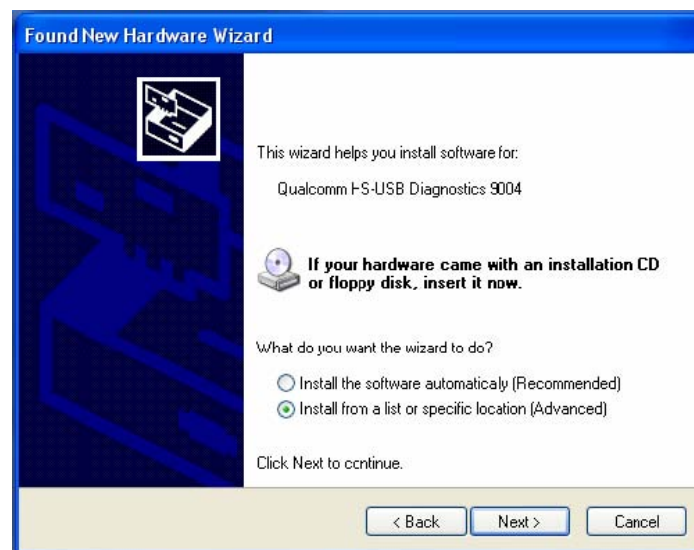
10 The User guide of modem driver installation and dial up

The following instructions are about how to get to the internet by using it as a modem.

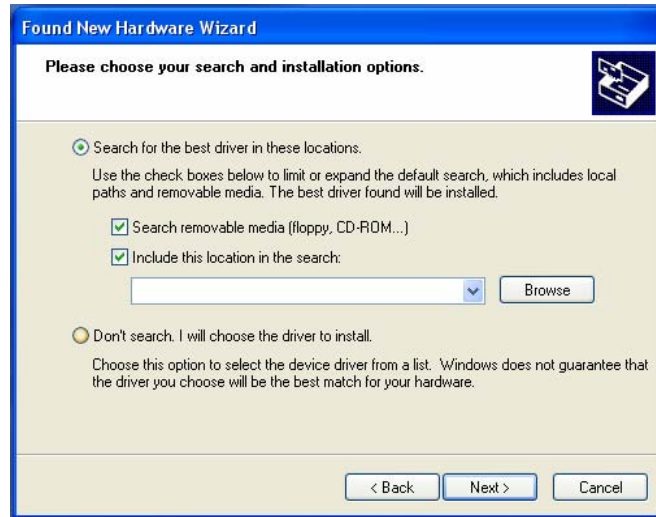
When you connect the Phone to PC, It will show the following Window.



Select next to continue.



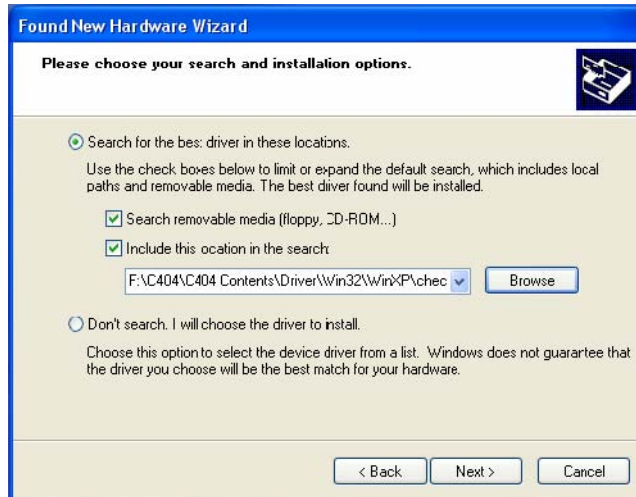
Click next to install driver from the specific location.



Click on browse to locate the driver location.



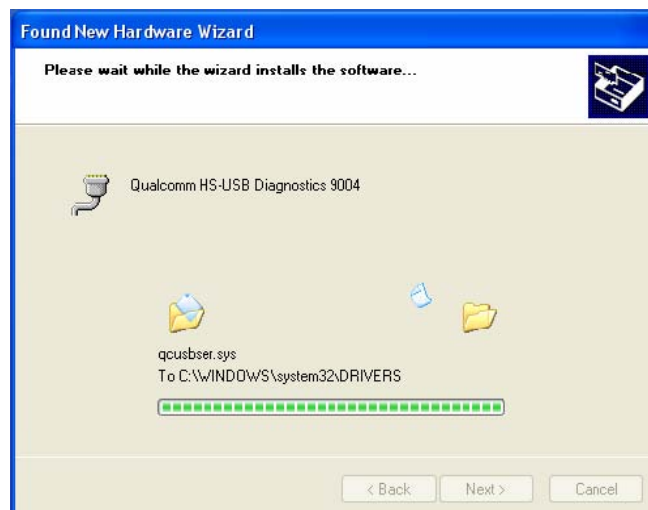
Select the driver folder as per your Windows configuration.



Click on next.



Click on Continue Anyway.

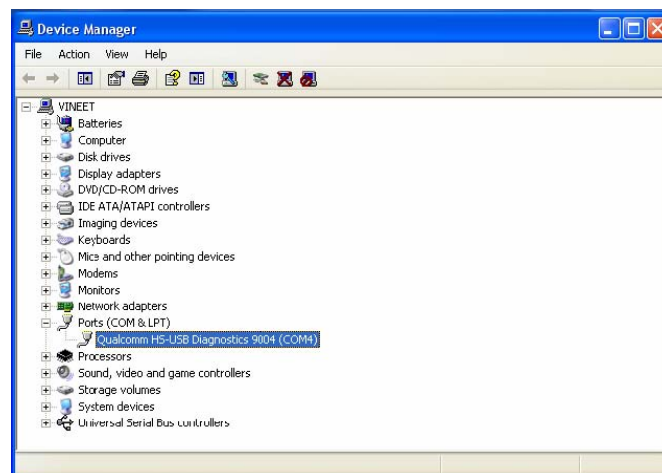




Click on Finish to complete the Installation of USM cable driver. The USB device installation will then complete by the following message box.



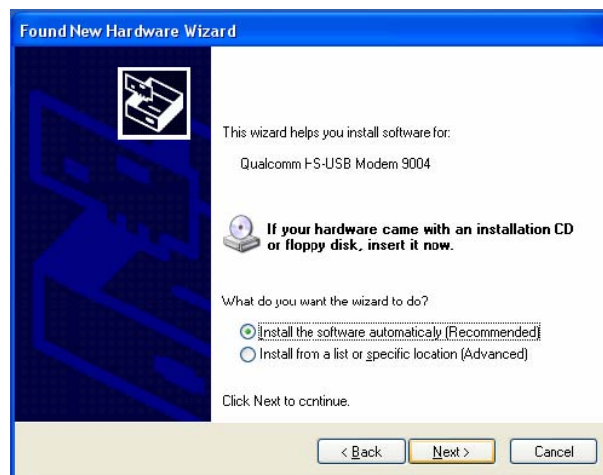
An examination of the Windows Device Manager's device list (as seen below) will display the successful installation of the Modem device.



Subsequently, the PC will ask to install Modem driver. It will show the following window.



Select next to continue.



Click next to install driver from the specific location.



Click on browse to locate the driver location.



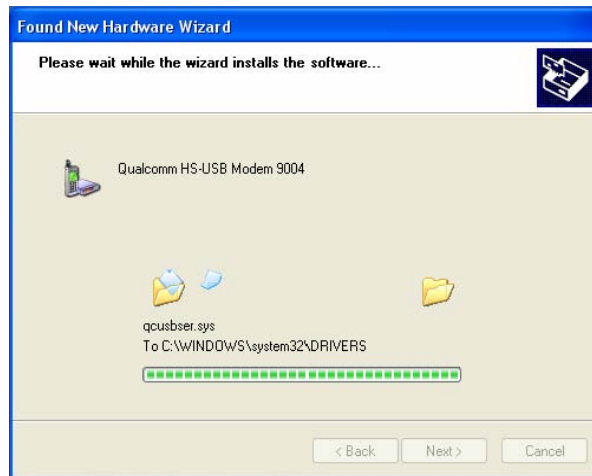
Select the driver folder as per your Windows configuration.



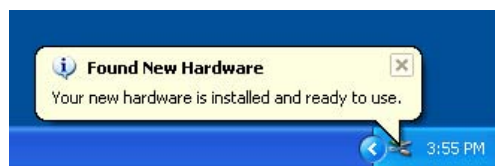
Click on next.



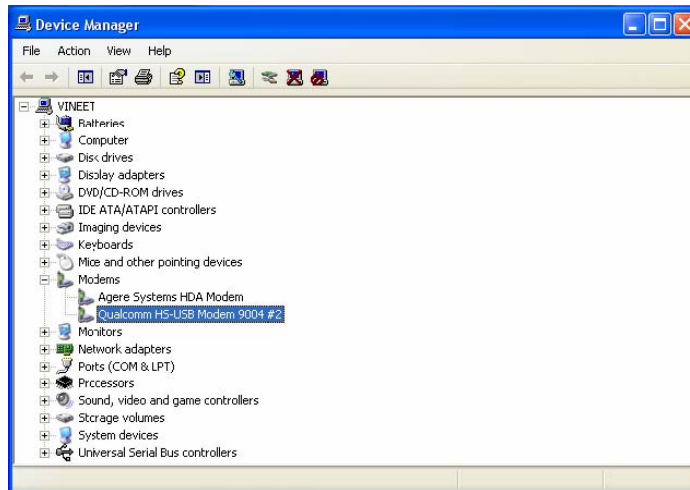
Click on Continue Anyway.



Click on Finish to complete the Installation of USM cable driver. The Modem device installation will then complete by the following message box.



An examination of the Windows Device Manager's device list (as seen below) will evidence the successful installation of the Modem device.



Your MOBILE PHONE contains a complete CDMA modem, so you can use it to connect your PC to the internet.

The following wizard will help you configure dial-up networking entries on your PC.

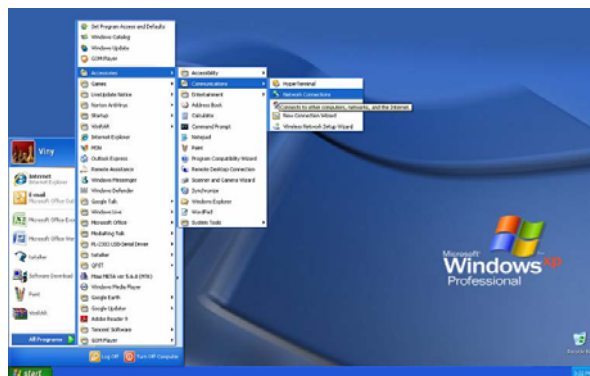
We use following parameter setting for example	
User Name	test@tmnet.com
Password	test
Dial Up Number	1515

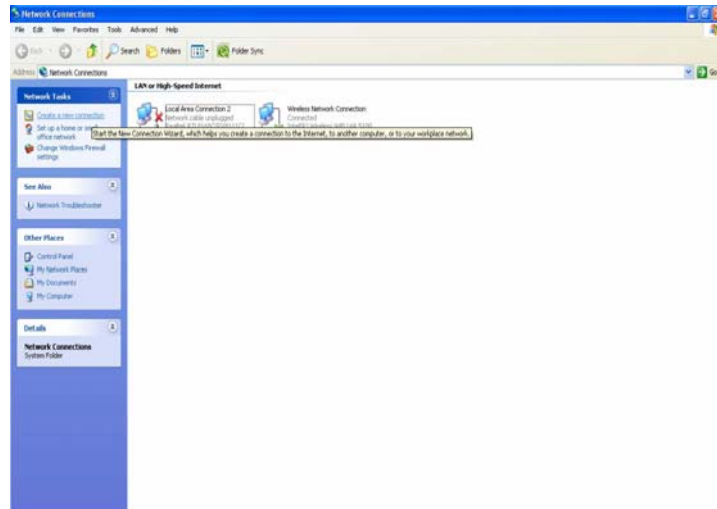
**** Please use the user name and password provided by the operator. The user name and password given here is just an example.

Modem configuration

Connect the PC and the handset using the cable that we supplied.

From windows system menu "Start" ->"Programs" ->"Accessories" ->"Communications" ->"New Connection Wizard", as seen below.





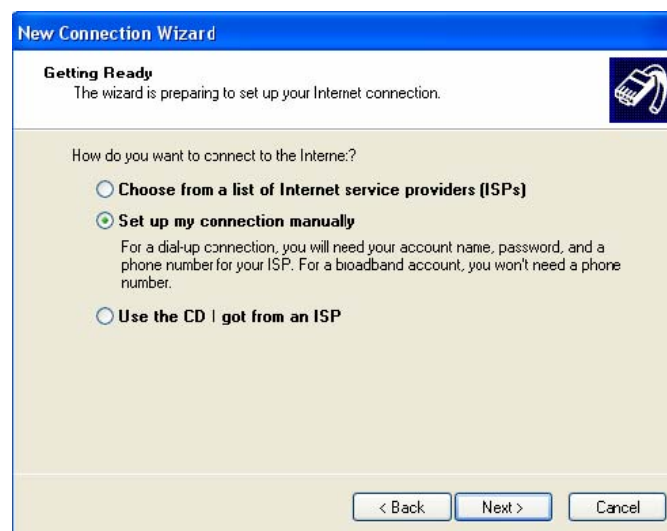
Click the Create a new connection.



Select the "Connect to the Internet" option, click the Next button.



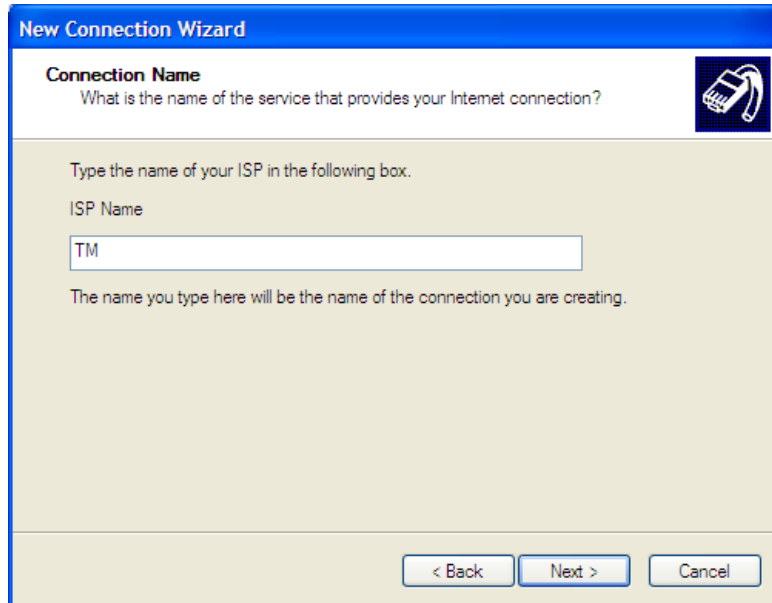
Select the "Set up my connection manually" option, click the Next button.



Select the "Connect using a dial-up modem" option, click the Next button.



Type the ISP Name:TM, click the Next button.



The screenshot shows the 'New Connection Wizard' window. The title bar is blue with the text 'New Connection Wizard'. Below the title bar, the window has a white header area with the text 'Connection Name' and 'What is the name of the service that provides your Internet connection?'. To the right of this text is a small icon of a modem. The main area of the window is light beige and contains the text 'Type the name of your ISP in the following box.' followed by 'ISP Name' and a text input field containing 'TM'. Below the input field is the text 'The name you type here will be the name of the connection you are creating.'. At the bottom of the window are three buttons: '< Back', 'Next >', and 'Cancel'.

**** Please use the name of operator as the ISP Name. The ISP name given here is just an example.

Type the ISP's phone number: 1515, click the Next button.



The screenshot shows the 'New Connection Wizard' window at the 'Phone Number to Dial' step. The title bar is blue with the text 'New Connection Wizard'. Below the title bar, the window has a white header area with the text 'Phone Number to Dial' and 'What is your ISP's phone number?'. To the right of this text is a small icon of a modem. The main area of the window is light beige and contains the text 'Type the phone number below.' followed by 'Phone number:' and a text input field containing '1515'. Below the input field is the text 'You might need to include a "1" or the area code, or both. If you are not sure you need the extra numbers, dial the phone number on your telephone. If you hear a modem sound, the number dialed is correct.'. At the bottom of the window are three buttons: '< Back', 'Next >', and 'Cancel'.

Type the ISP account name: test@tmnet.com, password: test, click the Next button.



New Connection Wizard

Internet Account Information
You will need an account name and password to sign in to your Internet account.

Type an ISP account name and password, then write down this information and store it in a safe place. (If you have forgotten an existing account name or password, contact your ISP.)

User name:

Password:

Confirm password:

Use this account name and password when anyone connects to the Internet from this computer

Make this the default Internet connection

< Back Next > Cancel

Click the Finish button, completing the new connection wizard.



New Connection Wizard

Completing the New Connection Wizard

You have successfully completed the steps needed to create the following connection:

TM

- Make this the default connection
- Share with all users of this computer
- Use the same user name & password for everyone

The connection will be saved in the Network Connections folder.

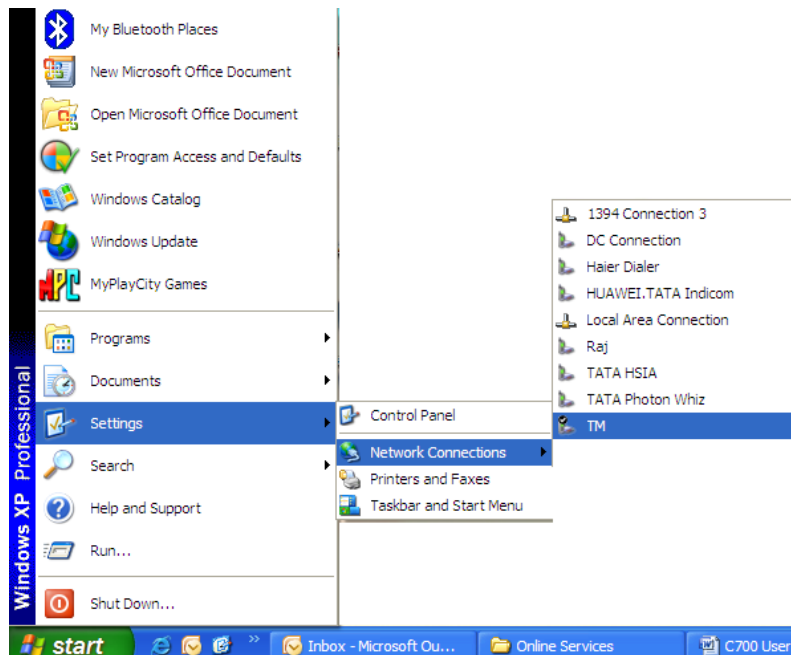
Add a shortcut to this connection to my desktop

To create the connection and close this wizard, click Finish.

< Back Finish Cancel

Dial-up to the network

From windows system menu "Start" ->"Settings" ->"Network Connections" ->"test@tmnet.com", as seen below.

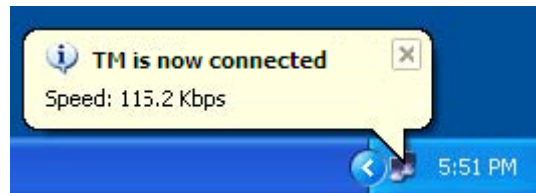
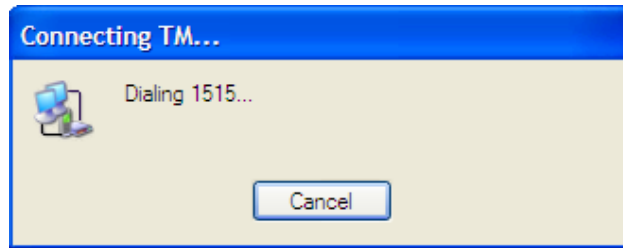


Click the Dial button to dial-up network, as seen below.

(User name: test@tmnet.com; Password: test; Dial-up number:1515)



The following dialog boxes will appear, indicating dialing, verifying username and password, registering process (as seen below).



To disconnect the dial-up networking, select the TM connection icon in the status bar. Select Disconnect from the pop-up dialog.


TM Status

General Details

Connection

Status:	Connected
Duration:	00:01:03
Speed:	115.2 Kbps

Activity

Sent		Received
Bytes:	1,006	188
Compression:	0 %	0 %
Errors:	0	0

Properties Disconnect

Close

Appendix I Common Fault Diagnostic

Trouble	Possible Reasons
The phone cannot be switched on	<ol style="list-style-type: none"> 1. Any power in battery? 2. Battery is installed properly?
Battery cannot be charged	<ol style="list-style-type: none"> 1. Check if the charger is connected with the phone correctly. 2. Check if the charger is connected with the socket correctly. 3. Is the battery usable? The performance of the battery will degrade after using for few years.
Fail to link the network	<ol style="list-style-type: none"> 1. The signal is too weak, or there may be some radio interference around. View the signal indicator on the screen to check status.
Cannot make a call	<ol style="list-style-type: none"> 1. Is the phone registered on the network? Check whether the screen displays signal indicator. 2. Is the 'bar outgoing' function enabled? 3. Calling prohibited due to call charges not paid?
Cannot answer a call	<ol style="list-style-type: none"> 1. Is the phone registered on the network? 2. Incoming call prohibited due to call charges not paid? 3. Is the 'call diverting' function enabled? 4. Is the 'bar incoming' function enabled?
Unable to use some functions	Consult with network operator for whether it supports these functions and whether subscription is required.

Appendix II Index

SMS	Short Message Service
ESN	Electronic Serial Number
MCC	Mobile Country Code
MNC	Mobile Network Code. For example, China Unicom's MNC is '01'; China Mobile's MNC is '00'.
Call diverting	A service provided by the network, which allows you to divert an incoming call to a specified number in different circumstances. Normally it is divided into: divert all, divert if busy, divert if no answer and divert if not connected.
Divert unconditionally	All incoming calls will be diverted by the network unconditionally.
Divert if busy	Divert the incoming call while you are already on line.
Divert if no answer	The network will divert the incoming call if the phone rings or vibrates for a specific time and you haven't answered it.
Divert if not connected	The network will divert the incoming call when the network fails to find your phone (switched off or out of the service area).
Roaming	Refer to the phone not used in the range of its local registered network. It includes international and domestic roaming. In this manual it refers to international roaming only.